

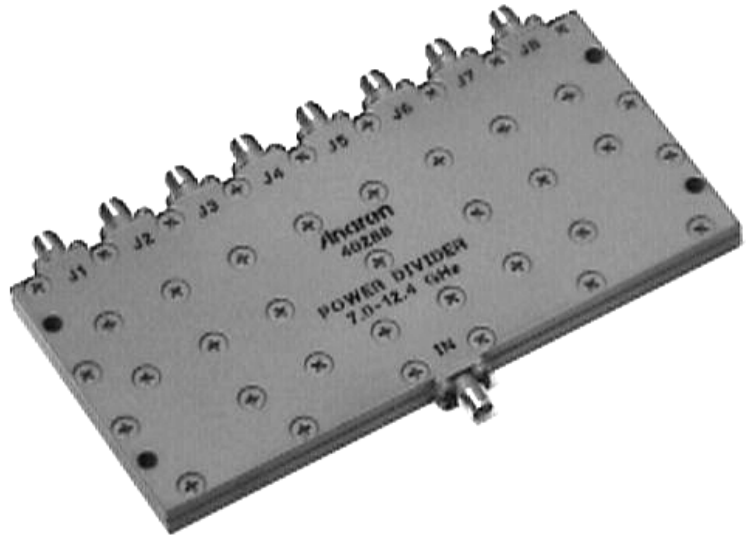
### Power Dividers 8-Way

#### Applications

- Phased Arrays
- Antenna Feed Networks
- Image Reject Mixers
- Test Systems
- LO Power Dividers

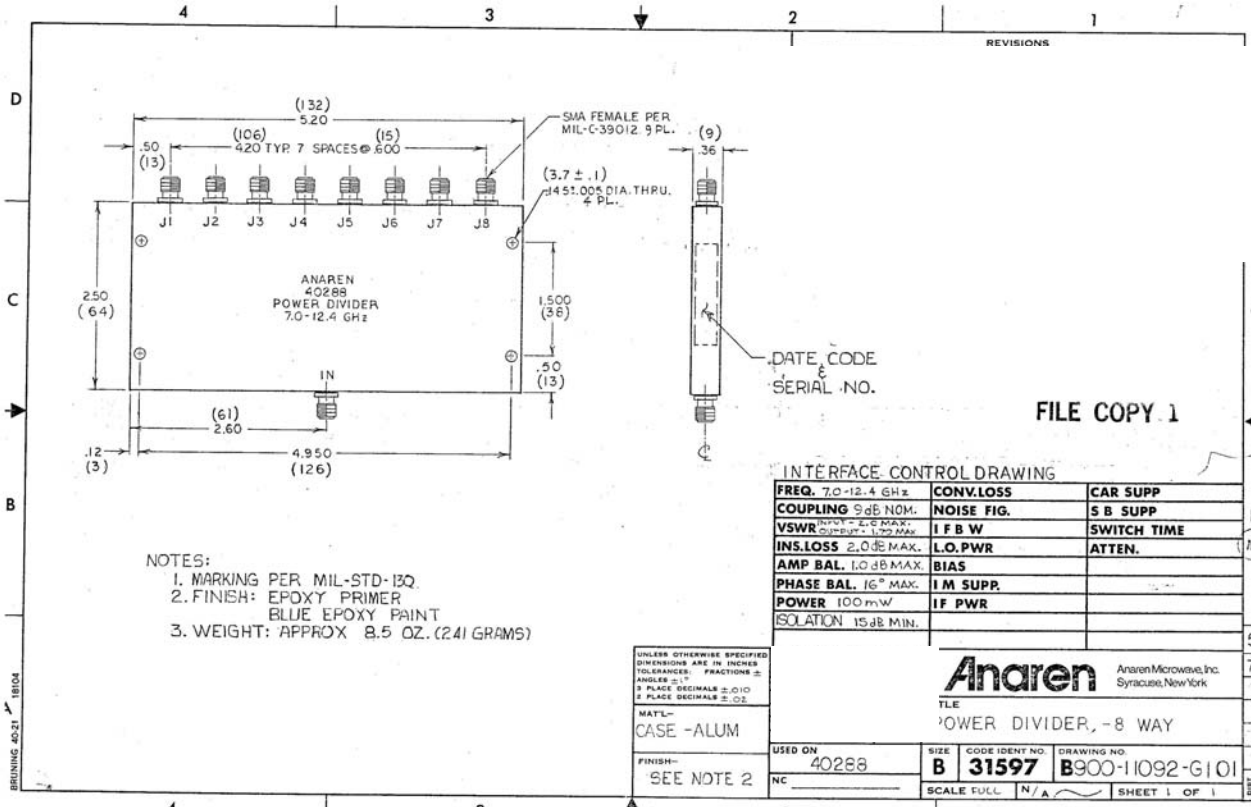
#### Features

- Military Grade
- 7.0 – 12.4 GHz
- 8-Way Power Split
- In-Phase
- Connectors Per MIL-C-39012
- Rugged Aluminum Housing
- Low VSWR
- Meets MIL-E-5400 Class 3 Requirements

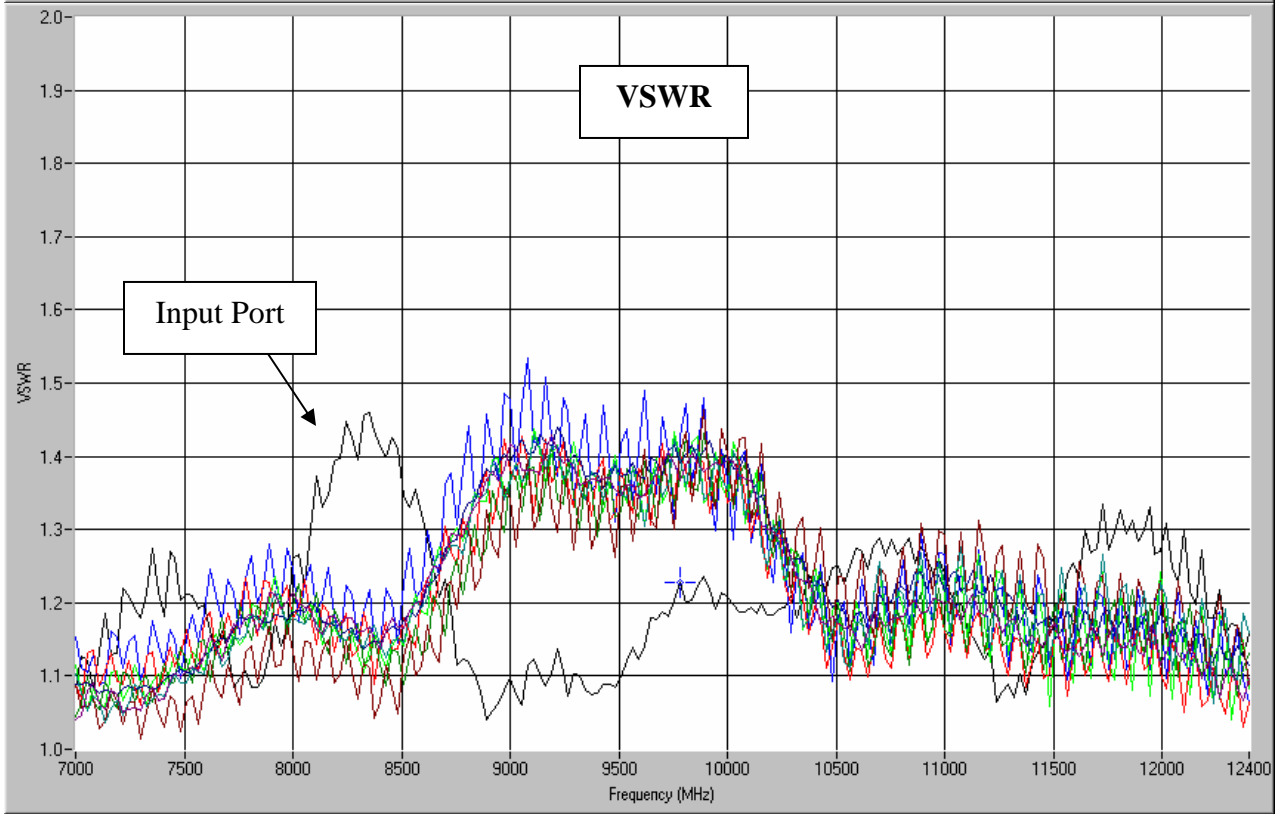
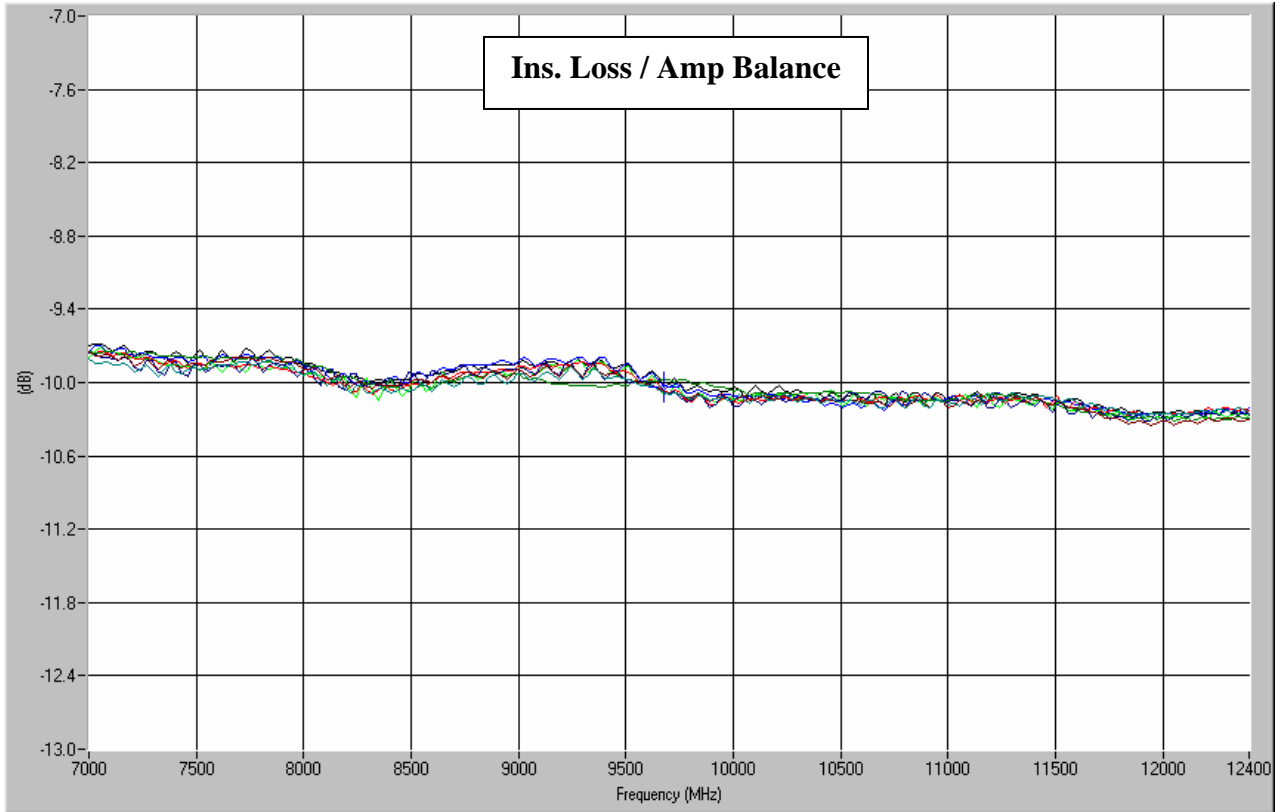


NOTES: Input power with load VSWR of 1.20:1  
Electrical and Mechanical Specifications subject to change without notice

#### Outline Drawing



Typical Test Data Plots



USA/Canada: (315) 432-8909  
 Toll Free: (800) 411-6596  
 Europe: +44 2392-232392

### Typical Test Data Plots

